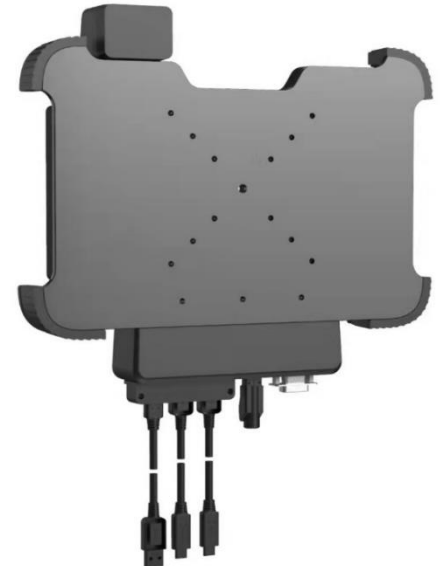
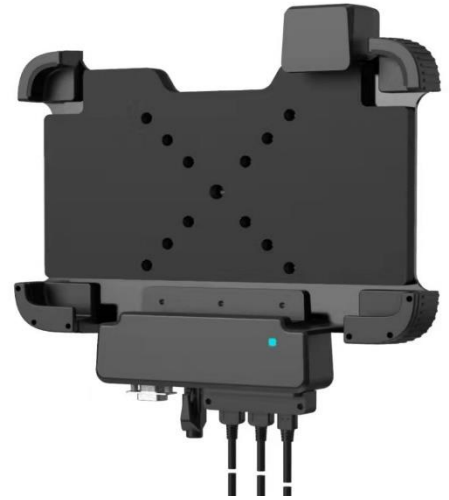




# Durios FPQ10

## Active wall / vehicle mount

- VESA Mount
- DC-IN 9-36V / 3A
- 2x USB-A
- USB-C (Power)
- RJ45-LAN
- RS 232
- integrated key-lock



### DOCKING COMPONENTS

1. Bracket
2. VESA-Arm-Mounting
3. Docking-Electric-Hub

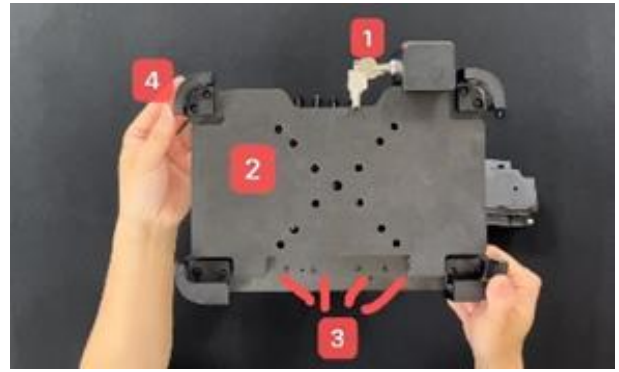


Mounted tablet FPQ-Series



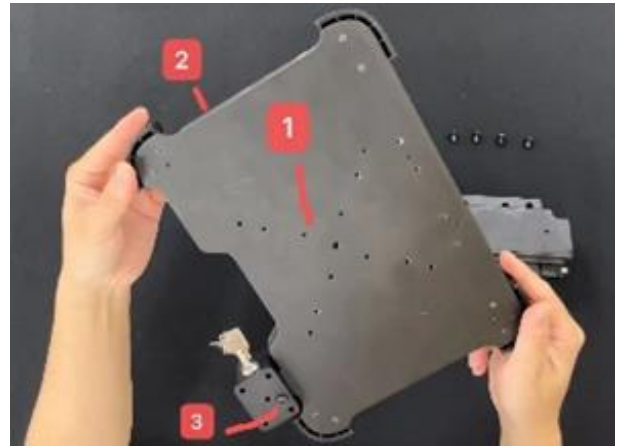
**Pos 1:**

1. Anti-theft lock
2. Vibration buffer design
3. Docking station hub fixing holes
4. Anti-slip rubber ring (4x)



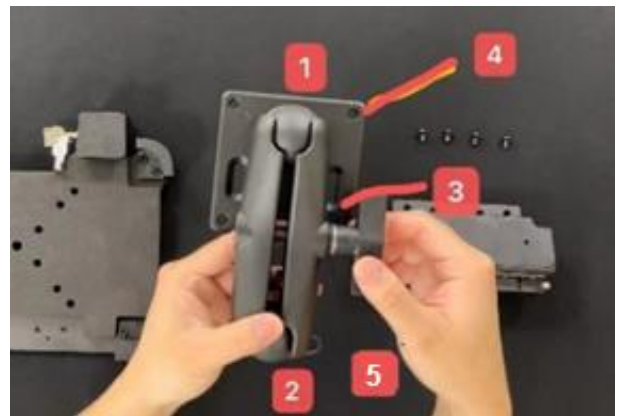
**Pos 2:**

1. VESA screw hole (100\*100mm, 75\*75mm, 30\*30mm)
2. Impact resistant design
3. safety screw



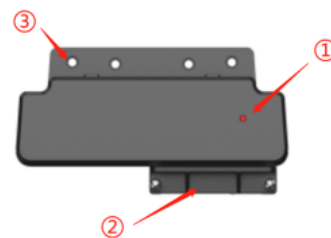
**Pos 3:**

1. 1.5 inch ball head
2. 1.5 inch ball head
3. Metal connecting arm (15CM)
4. Screw hole (M4 X 16mm)
5. Elastic knob



**Pos 4:**

1. HUB Power Indicator-LED (red)
2. USB-Cable Anti-drop cover (removable)
3. Frame fixing hole (M4 X 7mm)



**Pos 5:**

1. RS 232
2. RJ45
3. 2x USB 2.0
4. USB-C Power input (9V / 3A)



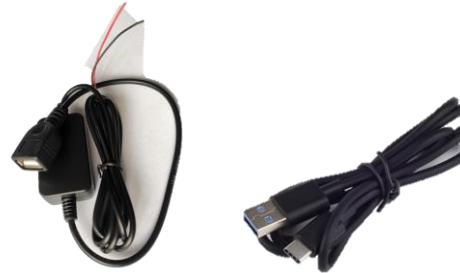
**Pos 6:**

1. Bottom pogo pin
2. Tablet positioning slots



**Pos 7:**

1. DC-DC converter input 9-36V / 3A with current- and over- voltage protection inside.
2. USB-A to USB-C cable for HUB and USB-A for DC-DC-converter Output 9V/3A



## Installation steps

1. Fix the VESA-Mounting-Set in the required position (it is recommended to use a diamond ball head)  
→ POS 3
2. Fix the Docking-Electric to the Bracket (4x M4 x7mm screws)  
→ POS 1/4
3. Fasten the square ball head to the back of the Bracket  
→ POS 2/3
4. Connect Connecting VESA Mount and fixed frame (4x M4 x 16mm screws)  
→ POS 3
5. Open the anti-theft lock, loosen the safety screw, and the lock can slide up and down  
→ POS 1/2
6. Snap the tablet into the frame, close the lock, and tighten the safety screw  
→ POS 2
7. Adjust the stand to the proper position
8. Connect the USB A to USB C cable to the DC-DC converter 9V/3A  
→ POS 7
9. Connect the DC-DC converter the power source (battery / ignition)  
→ POS 7

## INSTRUCTIONS FOR USE

- Put the FPQ10-series tablet on the multi-function charger;
- Using DC power, insert the DC plug of the matching power adapter into a standard socket and make it in good contact;
- The type C end is connected to the base, and the indicator light is red at this time, which means that the power supply of the base is connected;
- The charging status of the FPQ10 series tablets is based on the charging indicator of the FPQ10 series tablets, that is, the red light is on to indicate charging, and the green light is on to indicate that the battery is fully charged.

## SAFETY INSTRUCTIONS

Before using this device, please read the product instructions and product surface markings carefully;

- During use, keep away from heat sources and high voltages, avoid children playing with the device, and do not hit the charger;
- Please keep the pin connector clean, and do not let other metal objects directly touch the pin connector of the charger during use, otherwise it may be dangerous or cause a short circuit and damage the product;
- Do not drop the device to cause impact, or use it in a strong vibration environment to avoid damage or affect the charging effect;
- The device can only be charged with the matching power adapter;
- If there is a fault, please consult your local dealer or our company's customer service center.



*There for you:*

**ACTURION**  
BEST of MOBILE-IT

Acturion Datasys GmbH  
Mühlweg 2a  
D-82054 Sauerlach

Email: [support@acturion.com](mailto:support@acturion.com)  
Telefon: +49 (8104) 629330

[info@acturion.com](mailto:info@acturion.com)  
[www.acturion.com](http://www.acturion.com)

